



U.S. 1 SECTION RC3 PUBLIC MEETING



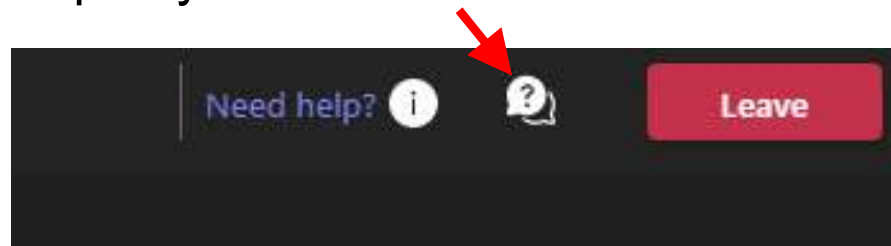
APRIL 23, 2025



QUESTIONS?

At the end of the presentation there will be an open Q&A session

Questions can be submitted by clicking on the Q&A feature located at the top of your screen



Please note the slide number in your question



AGENDA

Meeting Purpose

- To provide the public with an overview of the U.S. 1 Section RC3 Transportation Improvement Project in Middletown Township and Langhorne Manor and Langhorne boroughs and to answer questions and solicit feedback.

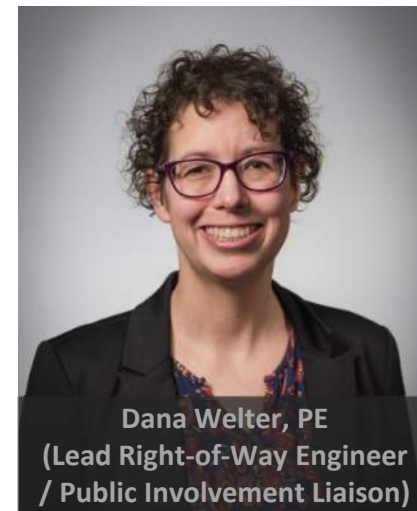
Agenda

- Introductions
- Existing Conditions
- Purpose and Need
- Current Build Alternative Review
- Environmental Assessment
- Anticipated Project Schedule
- Q&A
- Next Steps



INTRODUCTIONS

Presenters:



PROJECT AREA

U.S. 1/I-95
Interchange

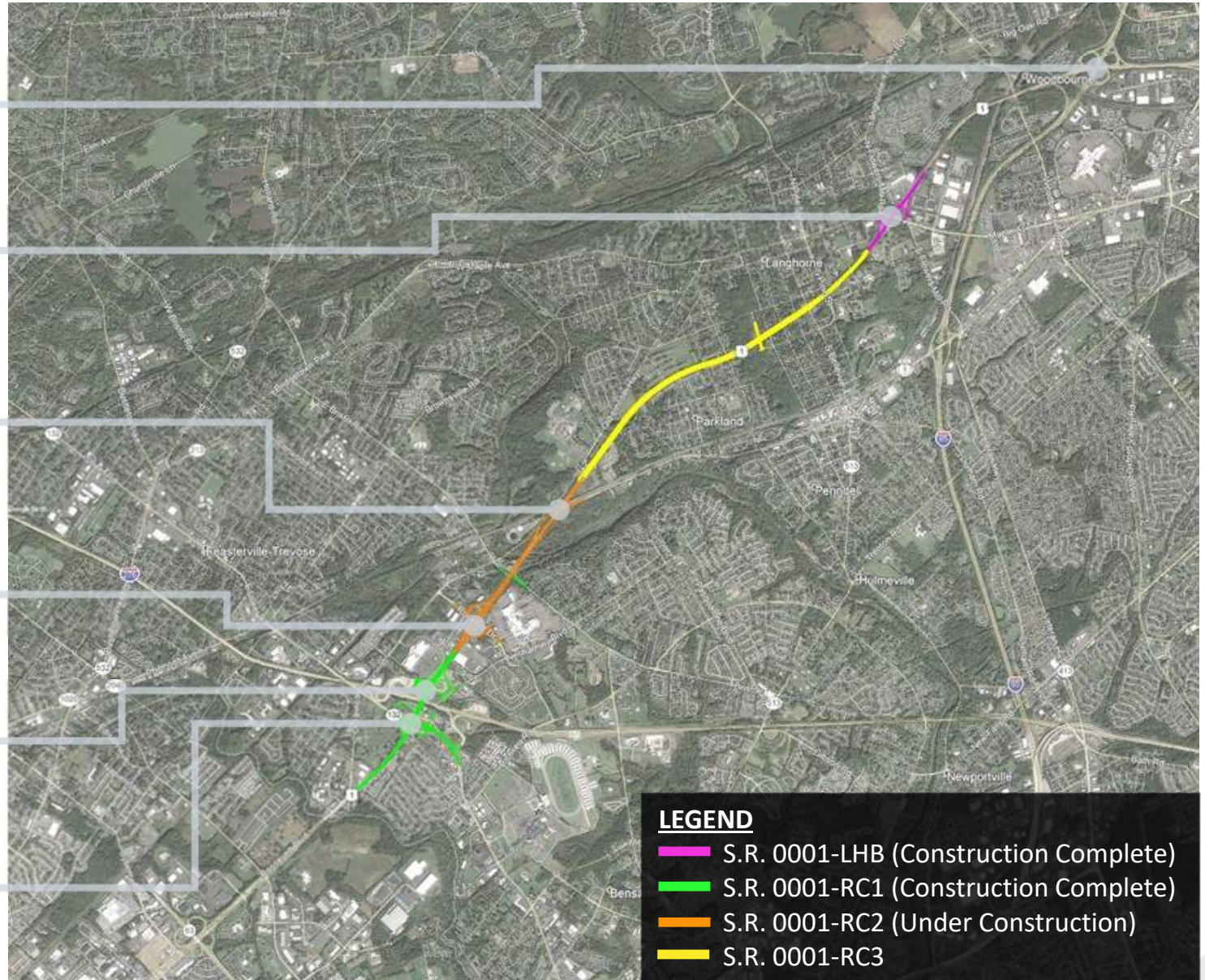
U.S. 1/PA 213
Interchange

U.S. 1/Business
Route 1
Interchange

U.S. 1/Rockhill
Drive Interchange

U.S. 1/PA Turnpike
Interchange

U.S. 1/Street Road
Interchange



EXISTING CONDITIONS



Aerial View of West Interchange Road Overpass (Looking South)



Aerial View Near Southern Project Limit (Looking North)



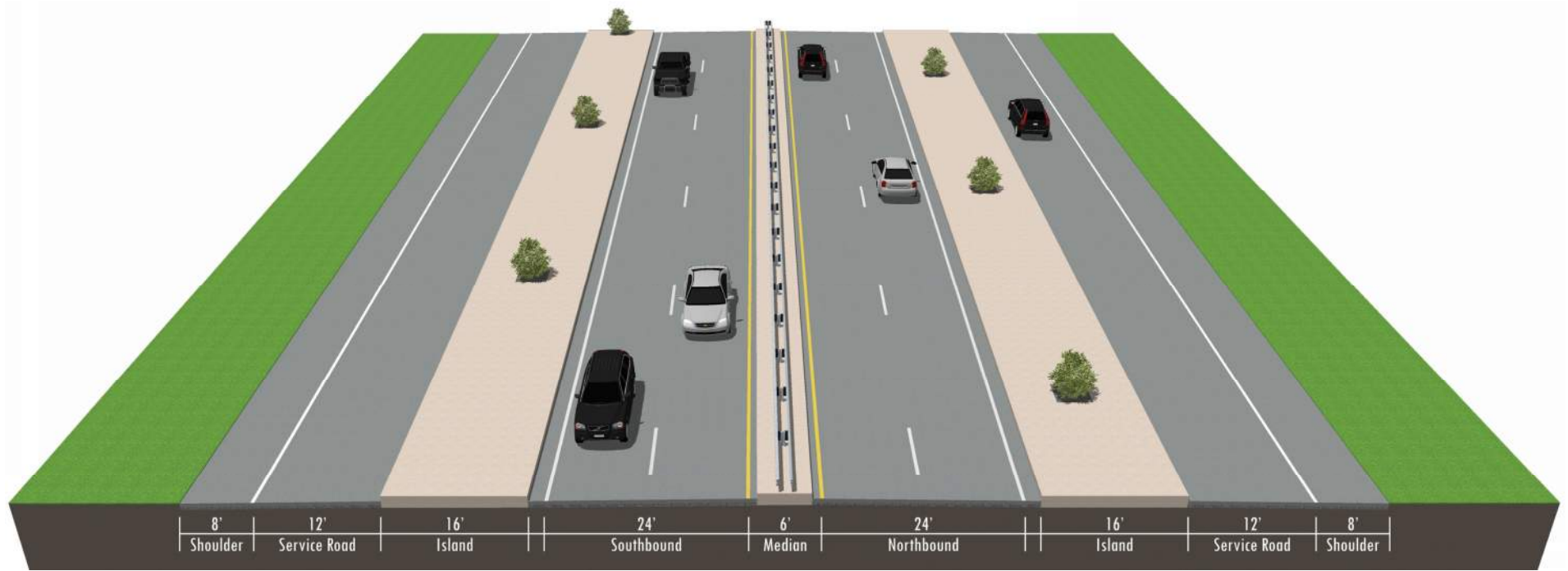
Aerial View of Hulmeville Avenue Intersection and PA 413 Overpass (Looking North)

- Two U.S. 1 travel lanes in each direction
- 4'-wide concrete curb and double-face guide rail median
- 1'-wide striped shoulders on both inside and outside of travel lanes
- One service (frontage) road travel lane in each direction for local access
- 16'-wide raised concrete traffic island separating U.S. 1 traffic and frontage road traffic
- Intermediate access crossovers allowing access between U.S. 1 travel lanes and service roads
- Four existing bridges:
 - U.S. 1 over S.R. 2008 (Highland Avenue)
 - West Interchange Road over U.S. 1
 - S.R. 0413 (PA 413) over U.S. 1
 - Corn Crib Lane over U.S. 1



EXISTING CONDITIONS

U.S. 1



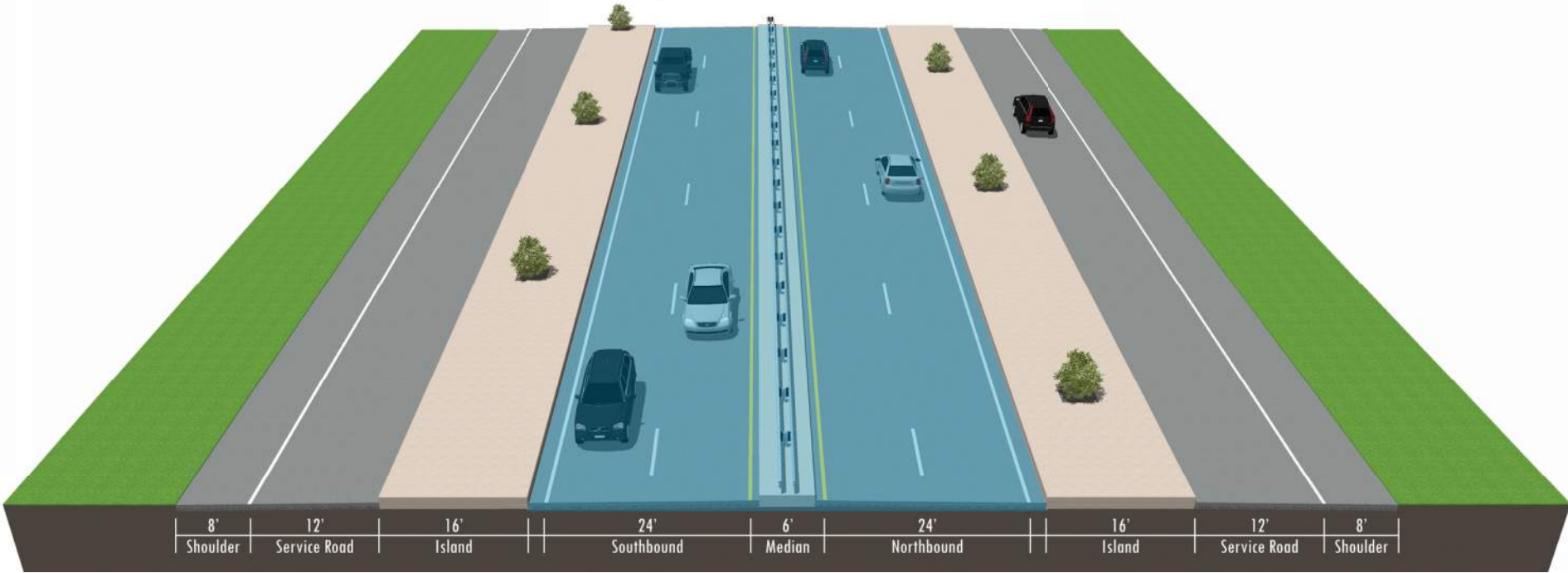
Existing Typical Section



EXISTING CONDITIONS

U.S. 1

Legal Right-of-Way
for Limited Access
(State)



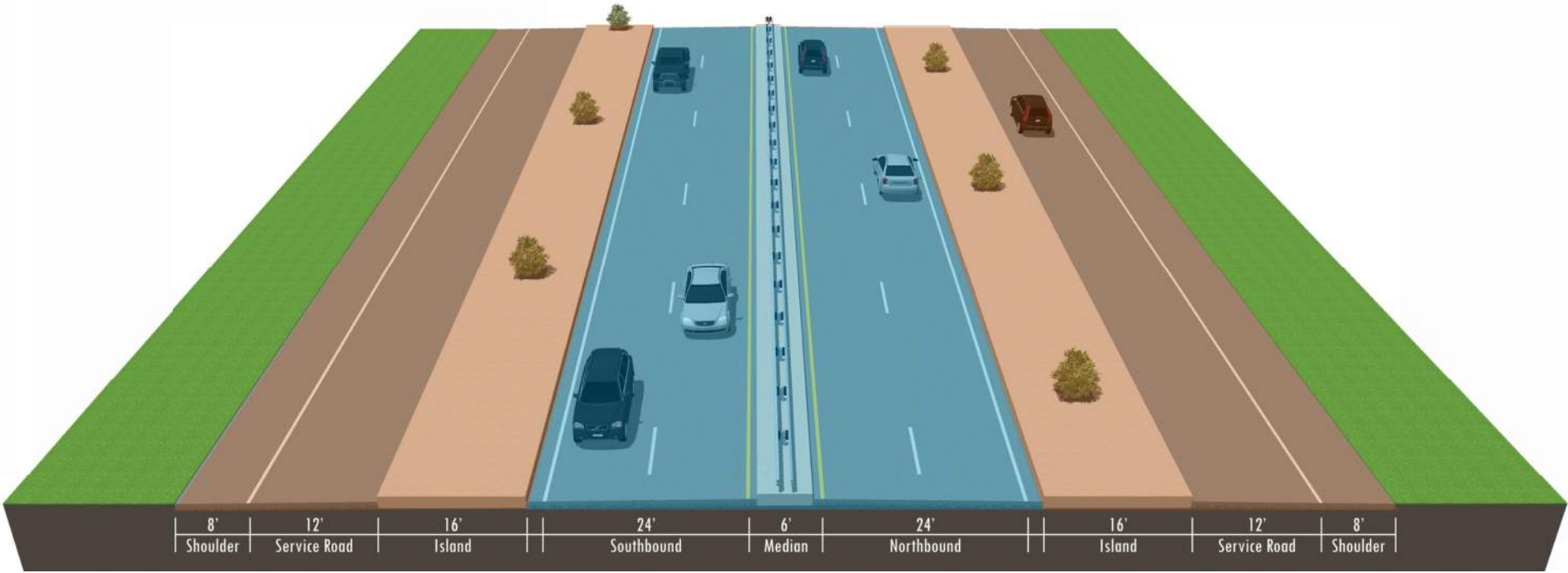
Existing Typical Section



EXISTING CONDITIONS

U.S. 1

Legal Right-of-Way for Service Road (Local) Legal Right-of-Way for Limited Access (State) Legal Right-of-Way for Service Road (Local)



Existing Typical Section



TRAFFIC ANALYSIS



- **Traffic Data & Analysis Refresh Goals**
 - Collect updated traffic data to reflect current traffic conditions post-pandemic.
 - Confirm previous findings of 2021 traffic report.
 - Collect traffic data at additional local intersections that previously weren't counted to better assess impacts on local roadway network.
 - Refresh and validate Origin - Destination data to confirm previous findings using multiple data sources.



TRAFFIC ANALYSIS



- **Traffic Data Refresh**
 - Traffic Counts (February 2024)
 - Streetlight Data
 - Data available from 2023 was used
 - Data used to determine origins and destinations of redirected traffic
 - Inrix Data
 - Data from February 2023 was used
 - Data used to validate the origin and destination findings from Streetlight database
- **Traffic Data Comparison**
 - This updated traffic analysis verified the results of the 2021 traffic and safety analysis.
 - At the project level, there is not a substantial change in projected Level-of-Service, operations, or safety in comparison to 2021 traffic analysis that would affect the previous recommendations.
 - Impacts to local roadway network by redistributed traffic are minimal.



PURPOSE AND NEED



Project Purpose:

- The primary purpose of this project is to facilitate safe and efficient travel along U.S. 1 within and through the project area to meet current and future transportation needs while providing a functional and modern roadway that meets current design criteria and driver expectations. In addition, a goal of the project is to consider bicycle and pedestrian mobility within the U.S. 1 Section RC3 corridor.

Project Needs:

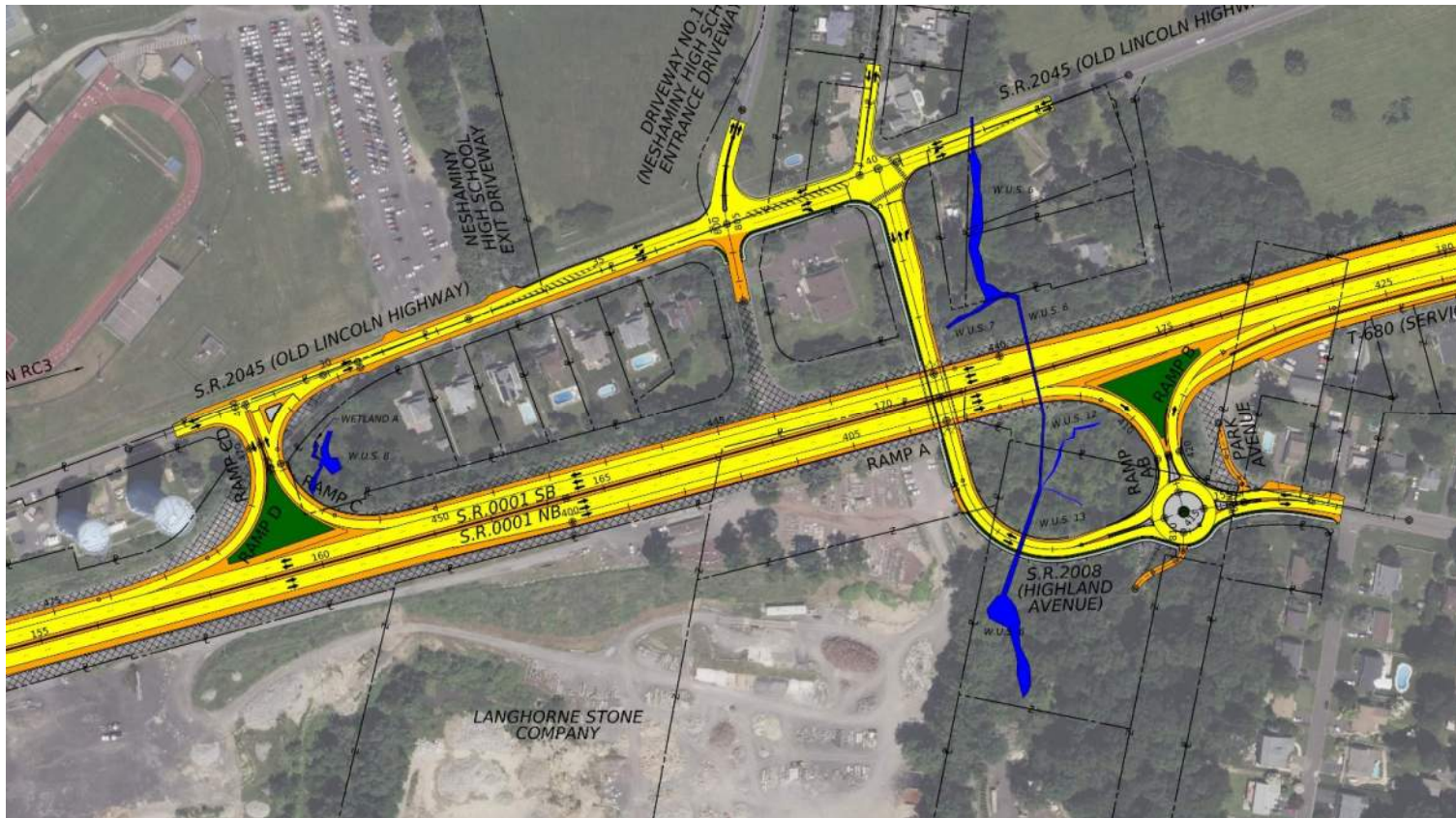
- Safety
- System Continuity



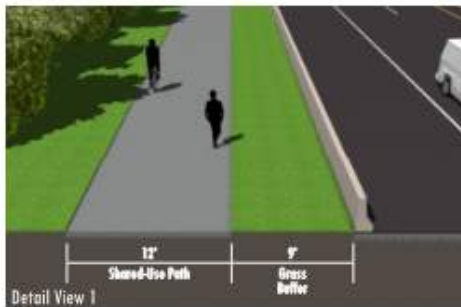
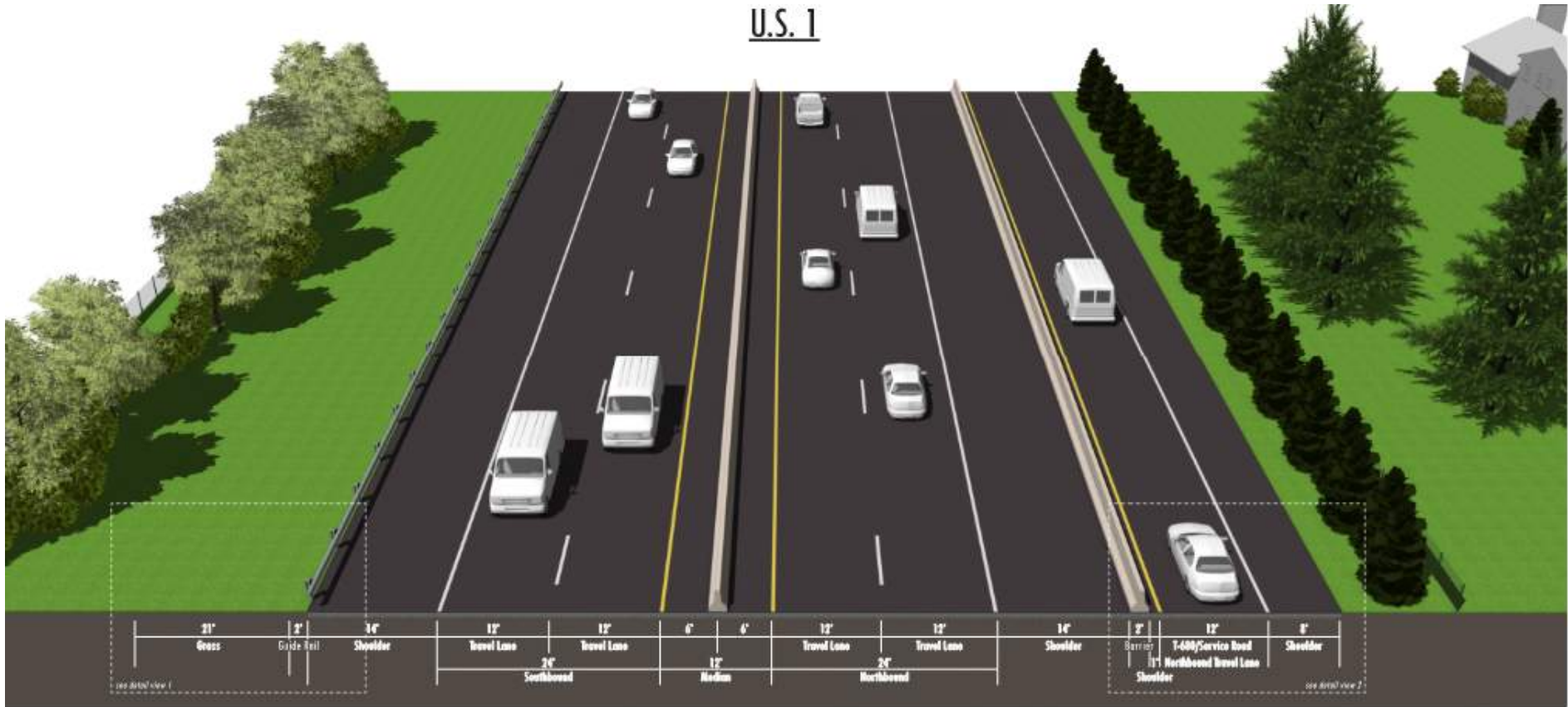
CURRENT BUILD ALTERNATIVE

Current Build Alternative Review

- Proposed Improvements Overview
 - Roll Plot and Typical Sections
 - See us1bucks.com
- Proposed Pedestrian / Bicycle Access Improvements
- Proposed Conceptual Traffic Calming Measures



CURRENT BUILD ALTERNATIVE



Proposed Typical Section



CURRENT BUILD ALTERNATIVE

Highland Avenue

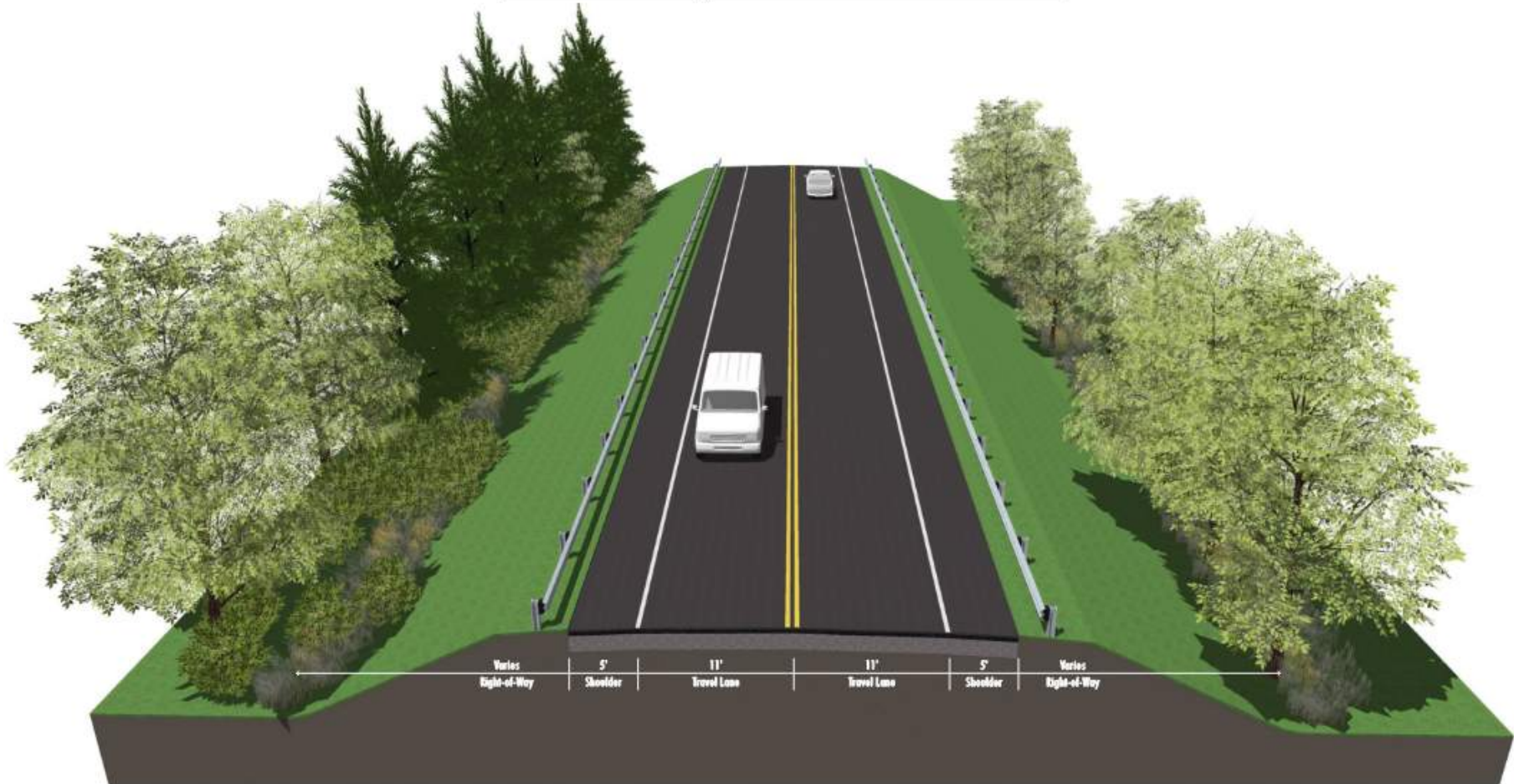


Proposed Typical Section



CURRENT BUILD ALTERNATIVE

West Interchange Road and Corn Crib Lane



Proposed Typical Section



CURRENT BUILD ALTERNATIVE

S.R. 0413 (Pine Street) - Initial Condition



Proposed Typical Section



TRAFFIC CALMING MEASURES

S.R. 0413 (Pine Street) Traffic Calming Option



TRAFFIC CALMING MEASURES

Gillam Ave. Traffic Calming Option



TRAFFIC CALMING MEASURES

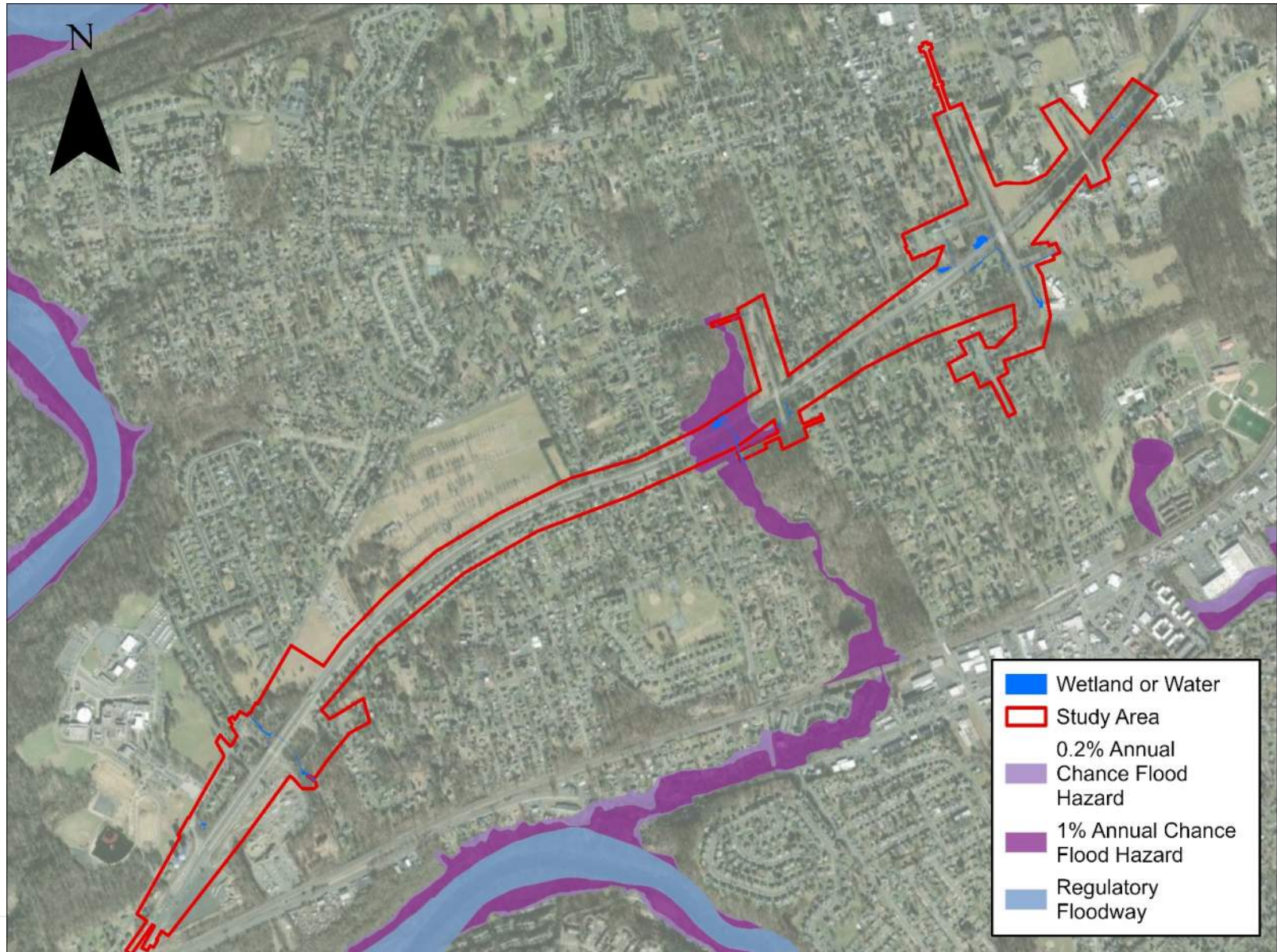
Gillam Ave. Traffic Calming Option



ENVIRONMENTAL RESOURCES

Natural Resources

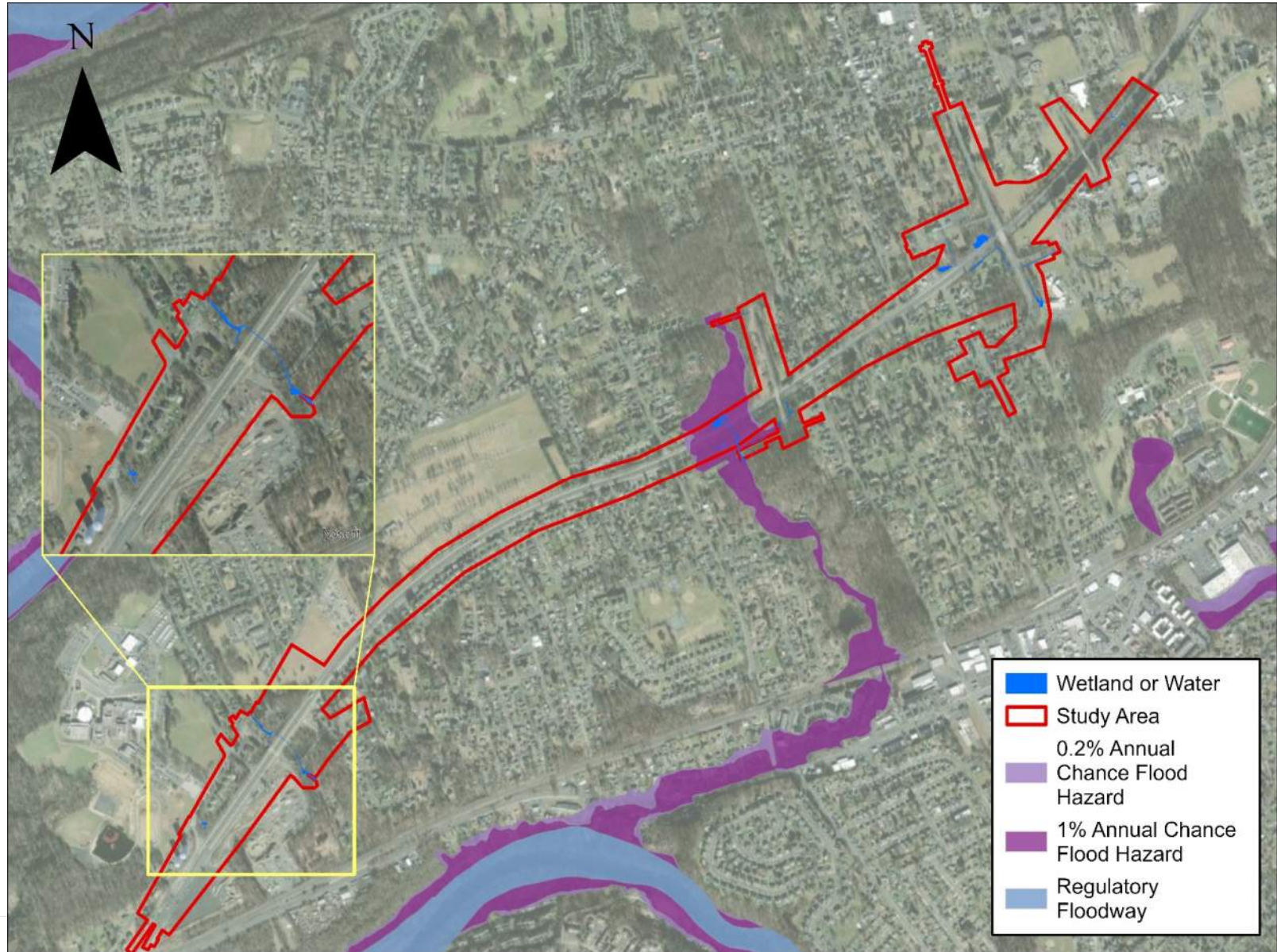
- Includes streams, wetlands, floodplains, threatened & endangered species



ENVIRONMENTAL RESOURCES

Natural Resources

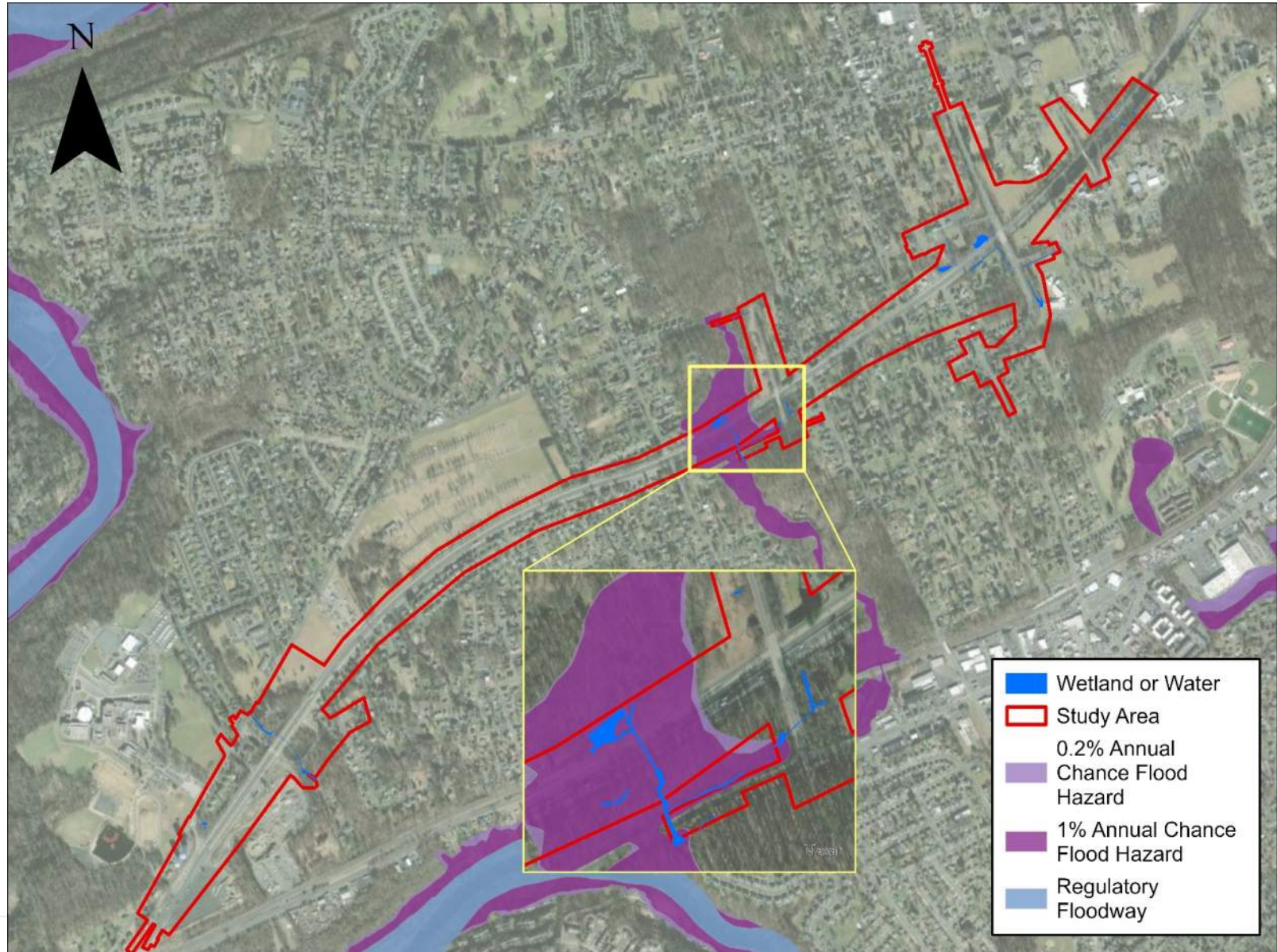
- Includes streams, wetlands, floodplains, threatened & endangered species



ENVIRONMENTAL RESOURCES

Natural Resources

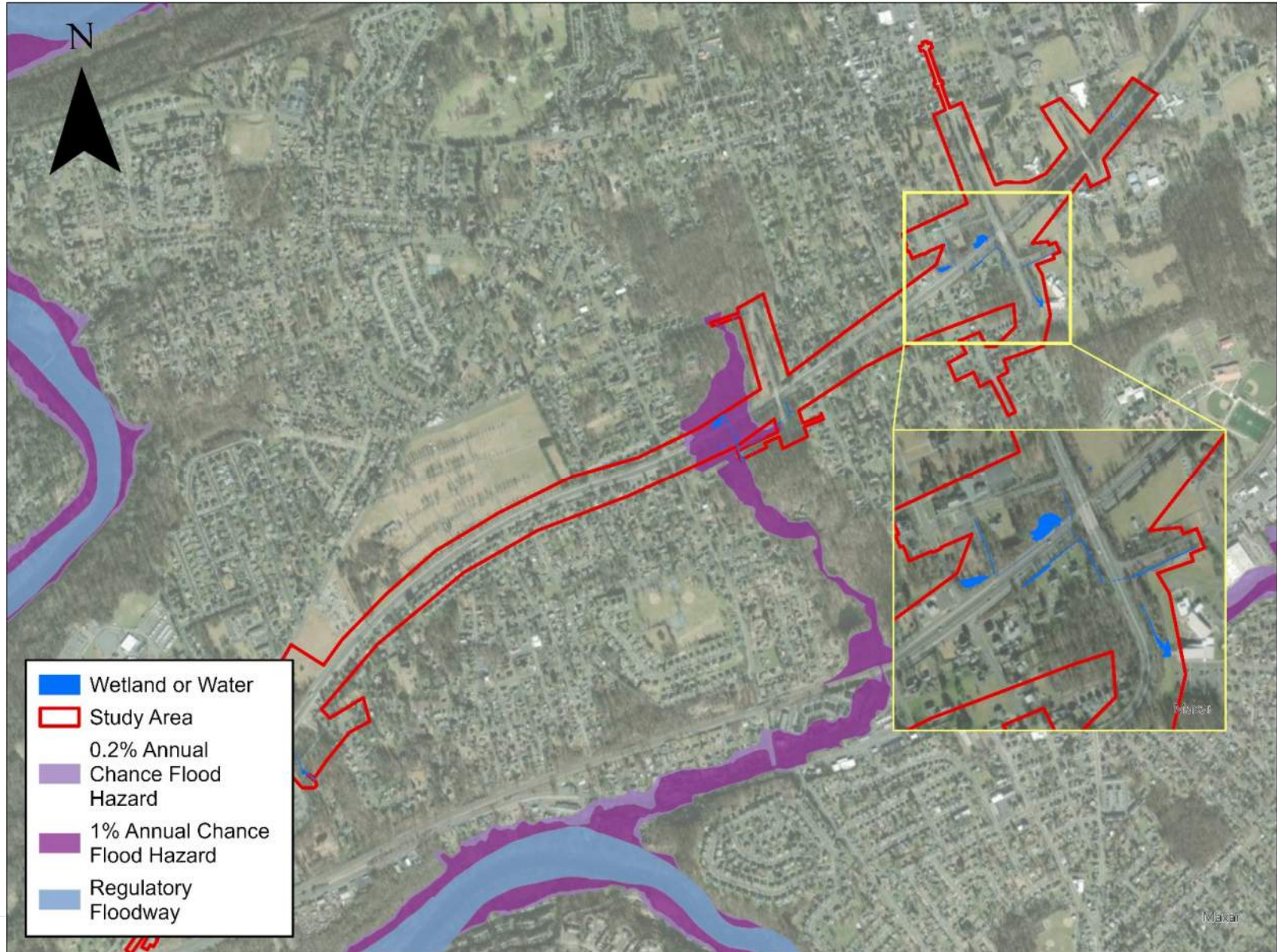
- Includes streams, wetlands, floodplains, threatened & endangered species



ENVIRONMENTAL RESOURCES

Natural Resources

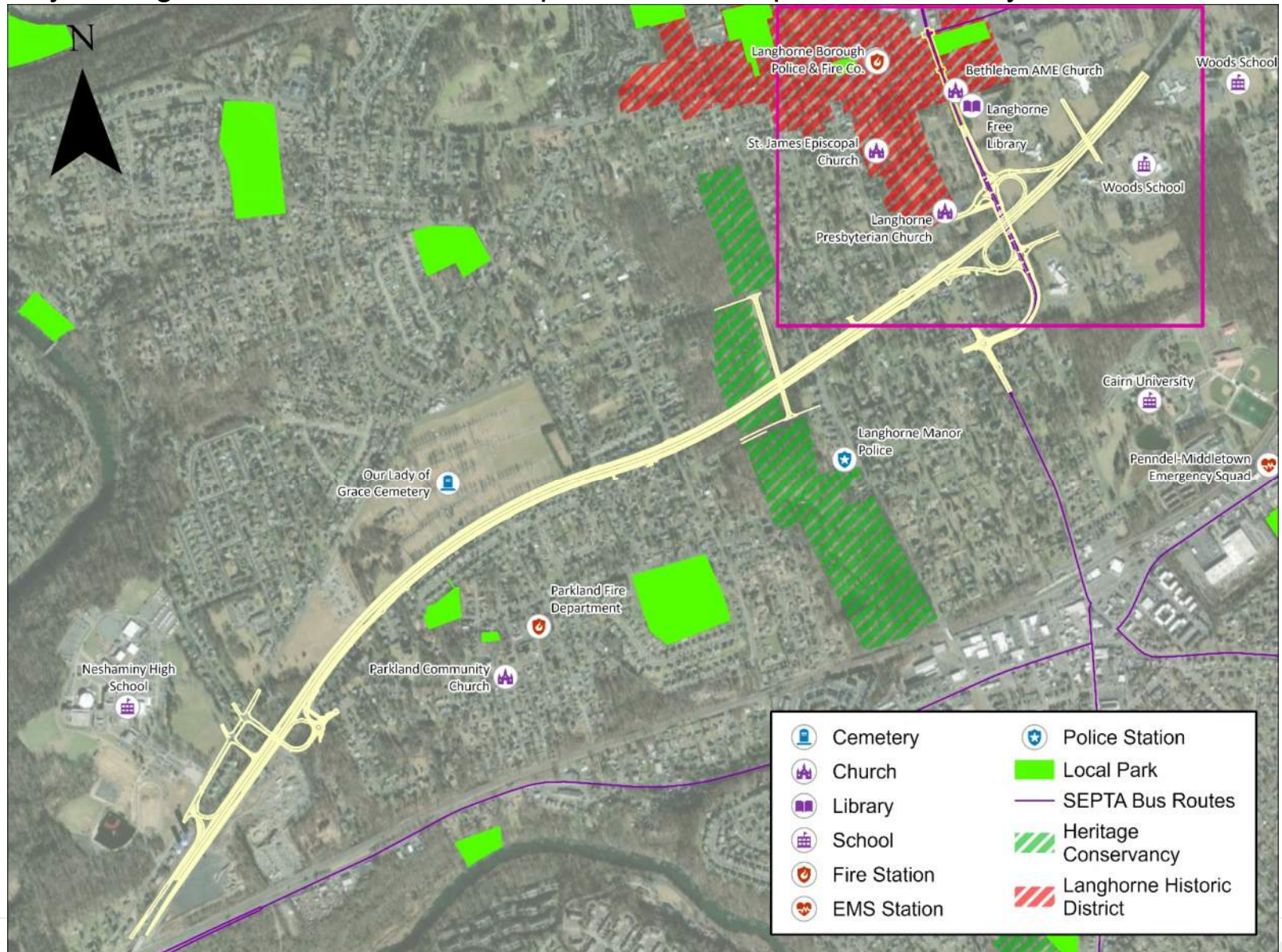
- Includes streams, wetlands, floodplains, threatened & endangered species



ENVIRONMENTAL RESOURCES

Cultural and Socioeconomic Resources

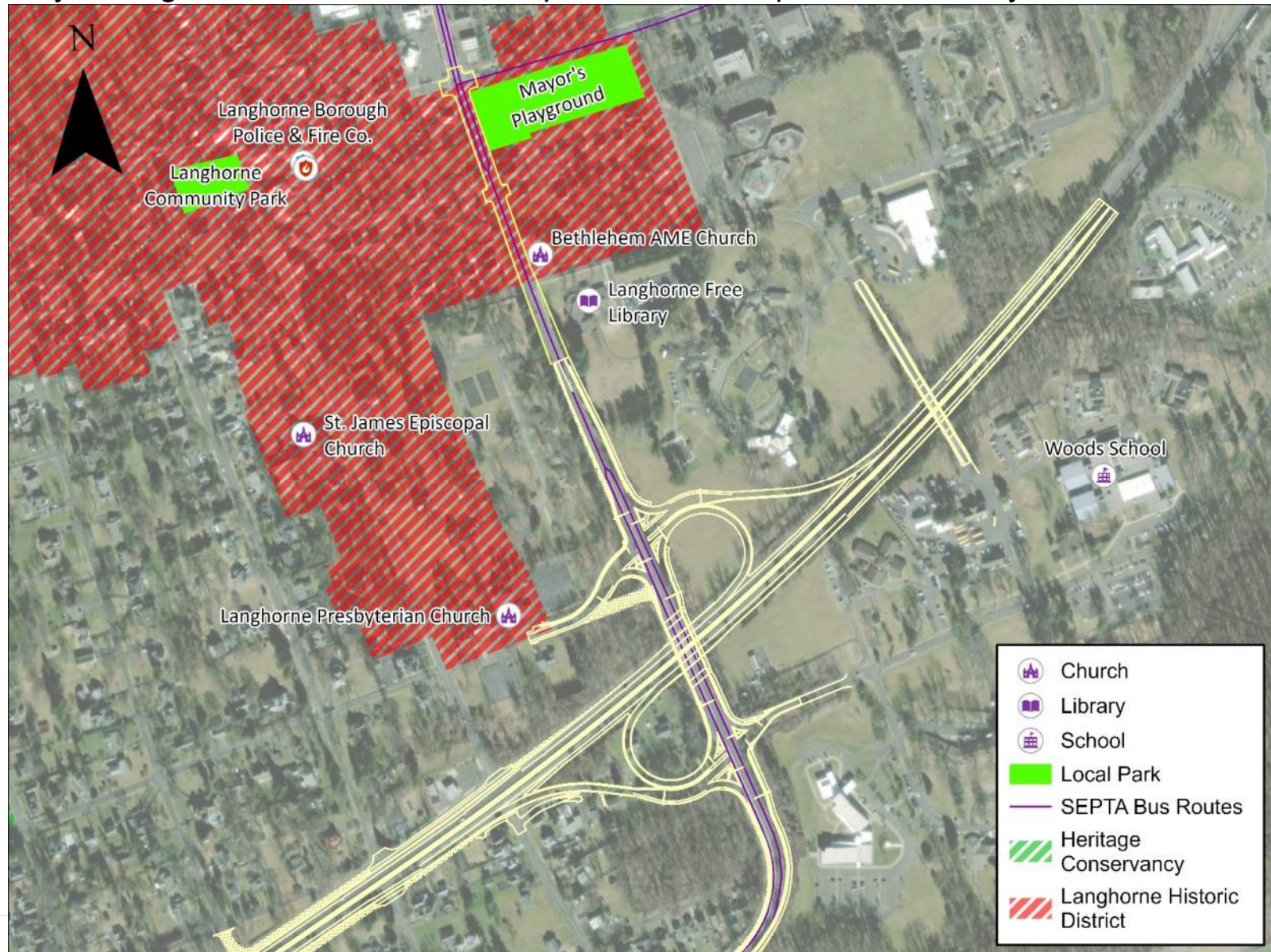
- Includes above ground historic resources & archaeological resources, community facilities and services, emergency management services, schools, places of worship and community assets



ENVIRONMENTAL RESOURCES

Cultural and Socioeconomic Resources

- Includes above ground historic resources & archaeological resources, community facilities and services, emergency management services, schools, places of worship and community assets



ENVIRONMENTAL RESOURCES

Section 4(f) Resources

What is a Section 4(f) Resource?

Section 4(f) refers to the original section within the U.S. Department of Transportation (US DOT) Act of 1966 which provided for consideration of Section 4(f) resources during transportation project development and applies to projects that receive funding from or require approval by an agency of the US DOT.

Section 4(f) resources include publicly owned parks, recreation areas, and wildlife or waterfowl refuges or any publicly or privately owned historic site listed or eligible for listing in the National Register of Historic Places (NRHP).

How does Section 4(f) apply to this project?

Two Section 4(f) resources have been identified within the project area:

- **Langhorne Historic District**, listed on the NRHP
 - Impacts, if any, to the Historic District will be determined in coordination with the PA SHPO, during preliminary design.
- **Mayor's Playground**, public park owned by Langhorne Borough
 - It is anticipated that the project will not result in impacts to Mayor's Playground, and park will remain open during construction.



Photo Credit: Google Maps

Public Feedback

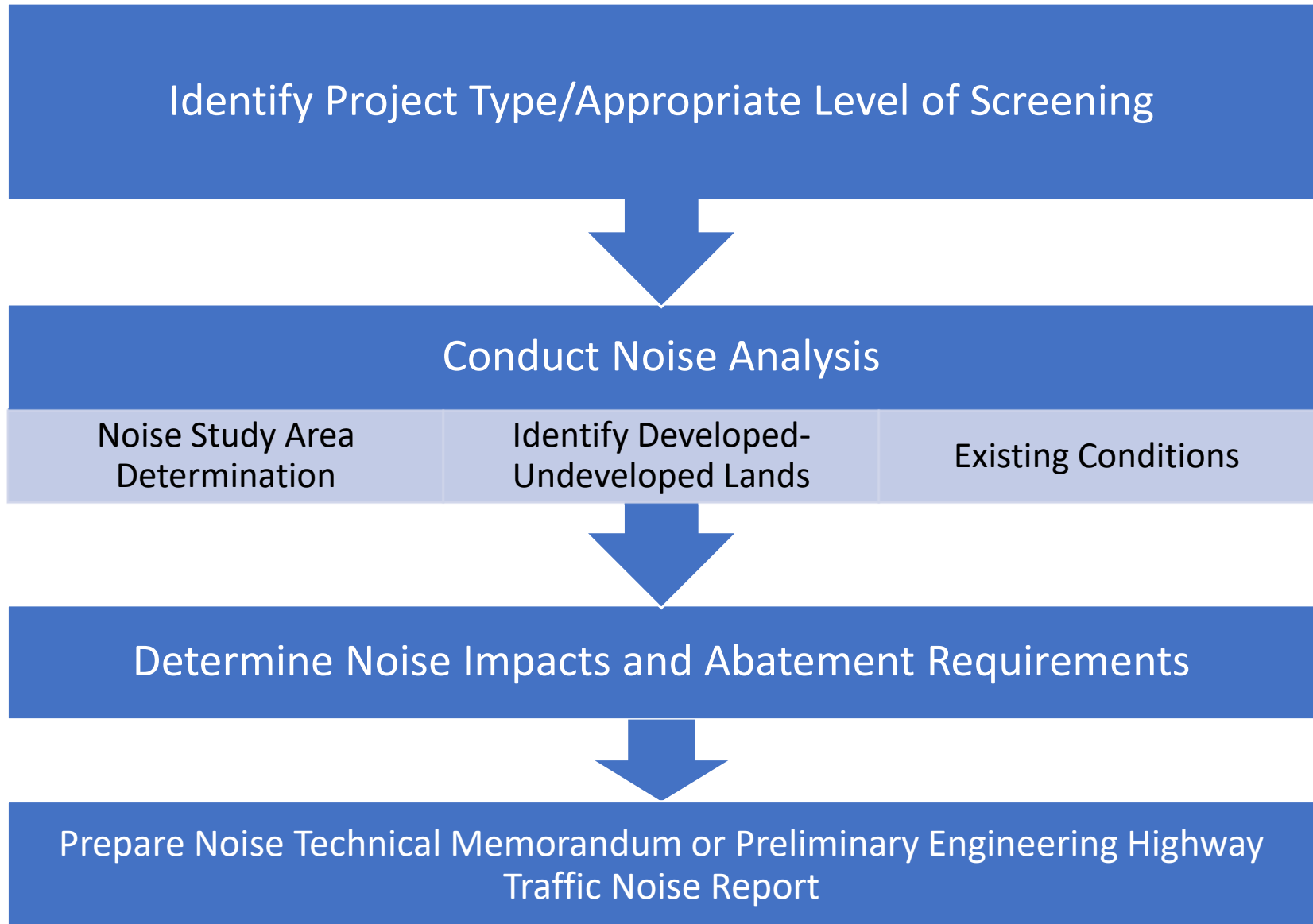
As part of the Section 4(f) determination, the public is given the opportunity to comment on how the proposed project may impact the activities, features, and attributes of the Section 4(f) resources.

The Project Comment Form gives you the opportunity to provide comments and feedback regarding the Section 4(f) resources.



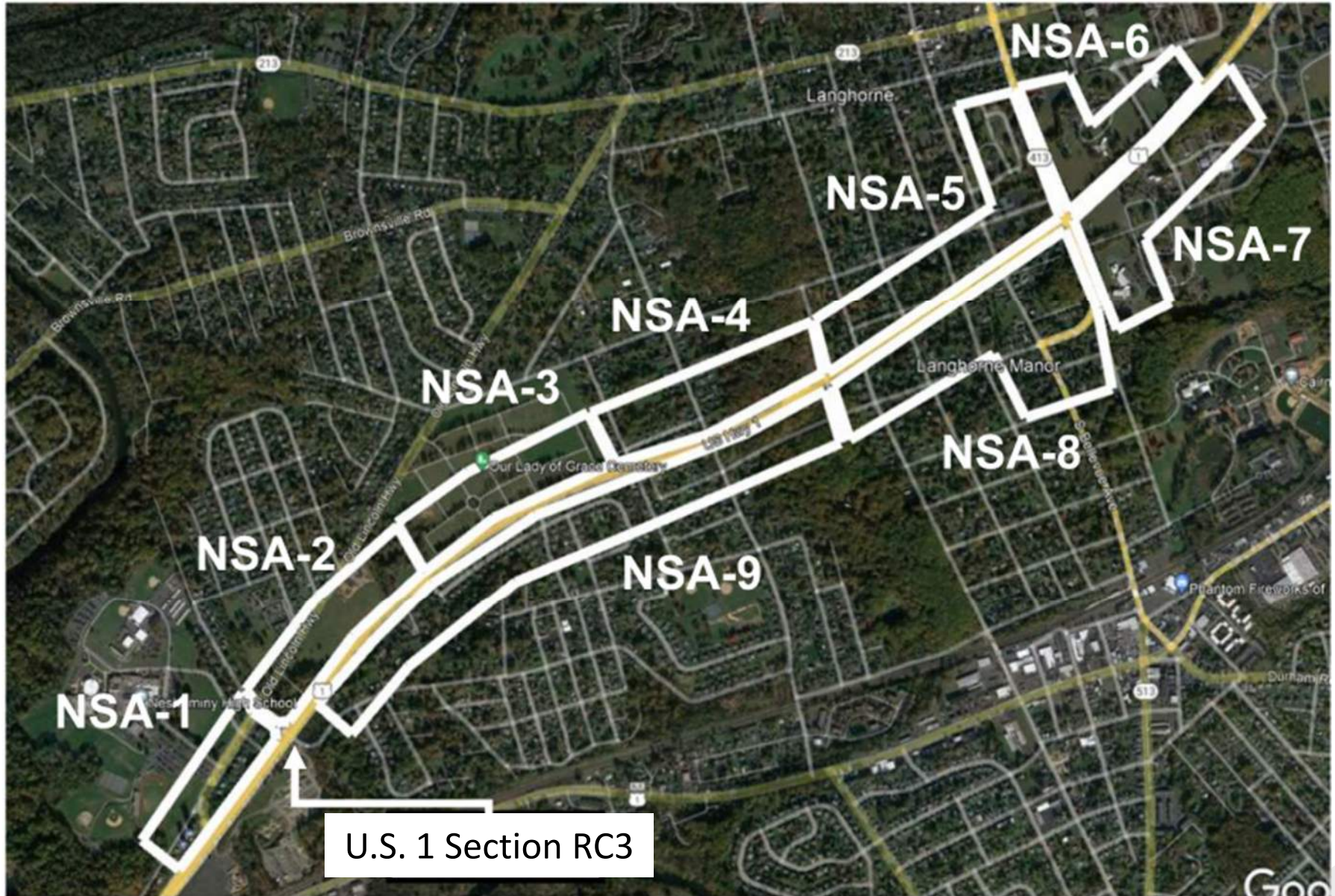
ENVIRONMENTAL RESOURCES

Noise Analysis and Studies Process



ENVIRONMENTAL RESOURCES

Noise Study Areas (NSAs)



ENVIRONMENTAL ASSESSMENT

Environmental Document

- Environmental Assessment (EA)
 - Updating / Finalization of environmental investigations
 - Publication of Environmental Assessment Document for public review
 - Public Hearing
 - Hybrid (In-person & Virtual)
- Environmental Schedule
 - 12-month time frame for environmental clearance



ENVIRONMENTAL ASSESSMENT

Anticipated Environmental Clearance Schedule



ANTICIPATED PROJECT SCHEDULE



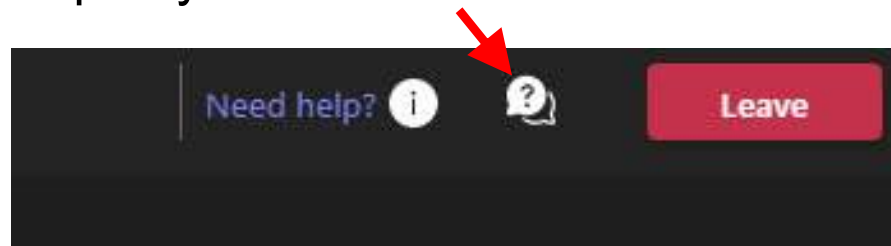
- Environmental Decision
 - Summer 2026
- Final Design / Right-of-Way Acquisition
 - Beginning 2027
(Anticipated duration 18-24 months)
- Construction
 - Anticipated 2029



QUESTIONS?

**Please submit your questions regarding
the project and / or presentation**

Questions can be submitted by
clicking on the Q&A feature
located at the top of your screen



Please note the slide
number in your question



NEXT STEPS



Next Steps

- Environmental Assessment (EA) document development
- Provide Draft EA Document for Public/Agency Comment
- Public Hearing
 - Late 2025 / Early 2026



THANK YOU FOR PARTICIPATING!

FOR MORE INFORMATION, VISIT THE PENNDOT DISTRICT 6 WEBSITE

WWW.PA.GOV/AGENCIES/PENNDOT/PROJECTS-NEAR-YOU/DISTRICT-6-PROJECTS

AND THE PROJECT WEBSITE

US1BUCKS.COM



APRIL 23, 2025

